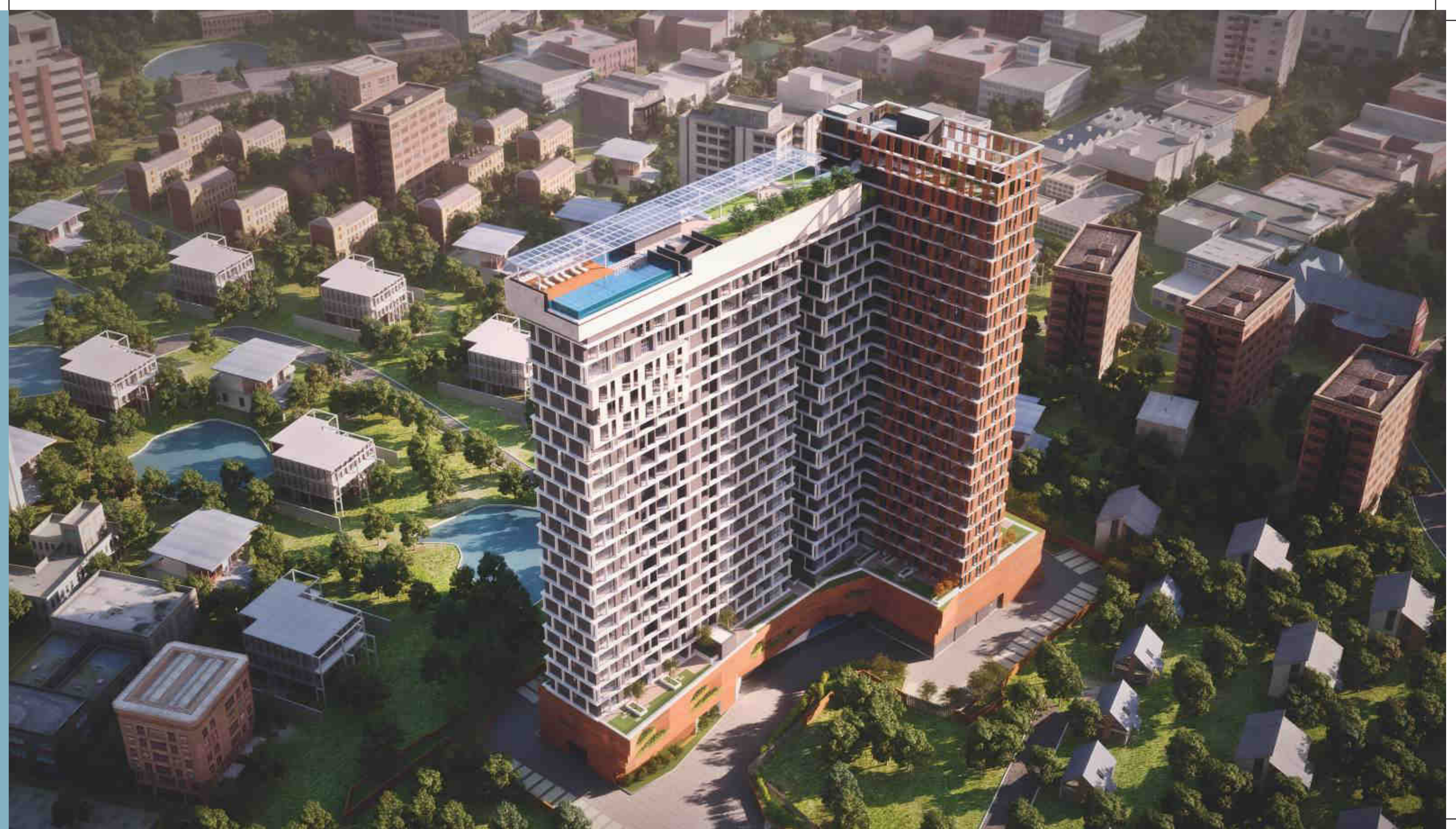
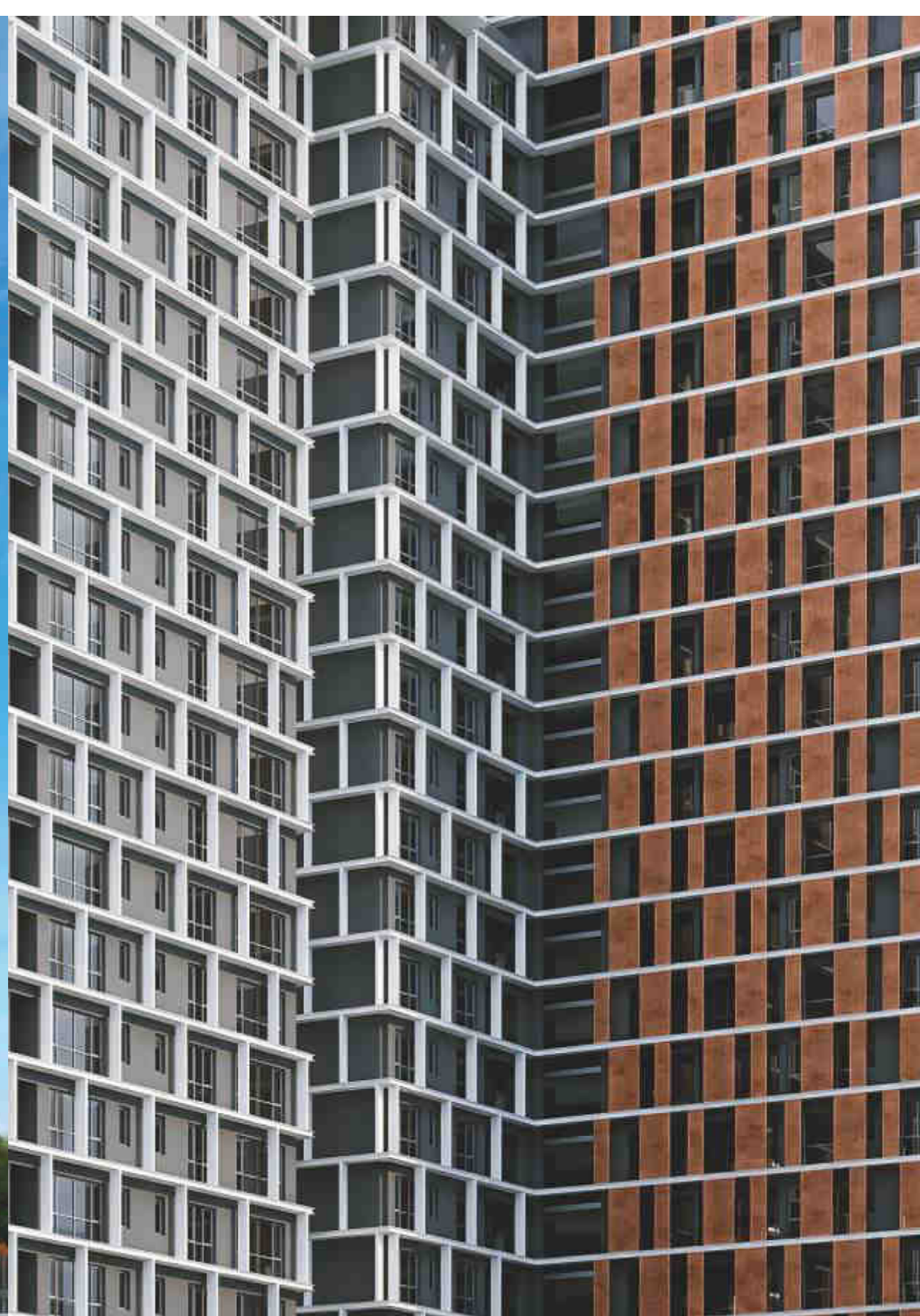
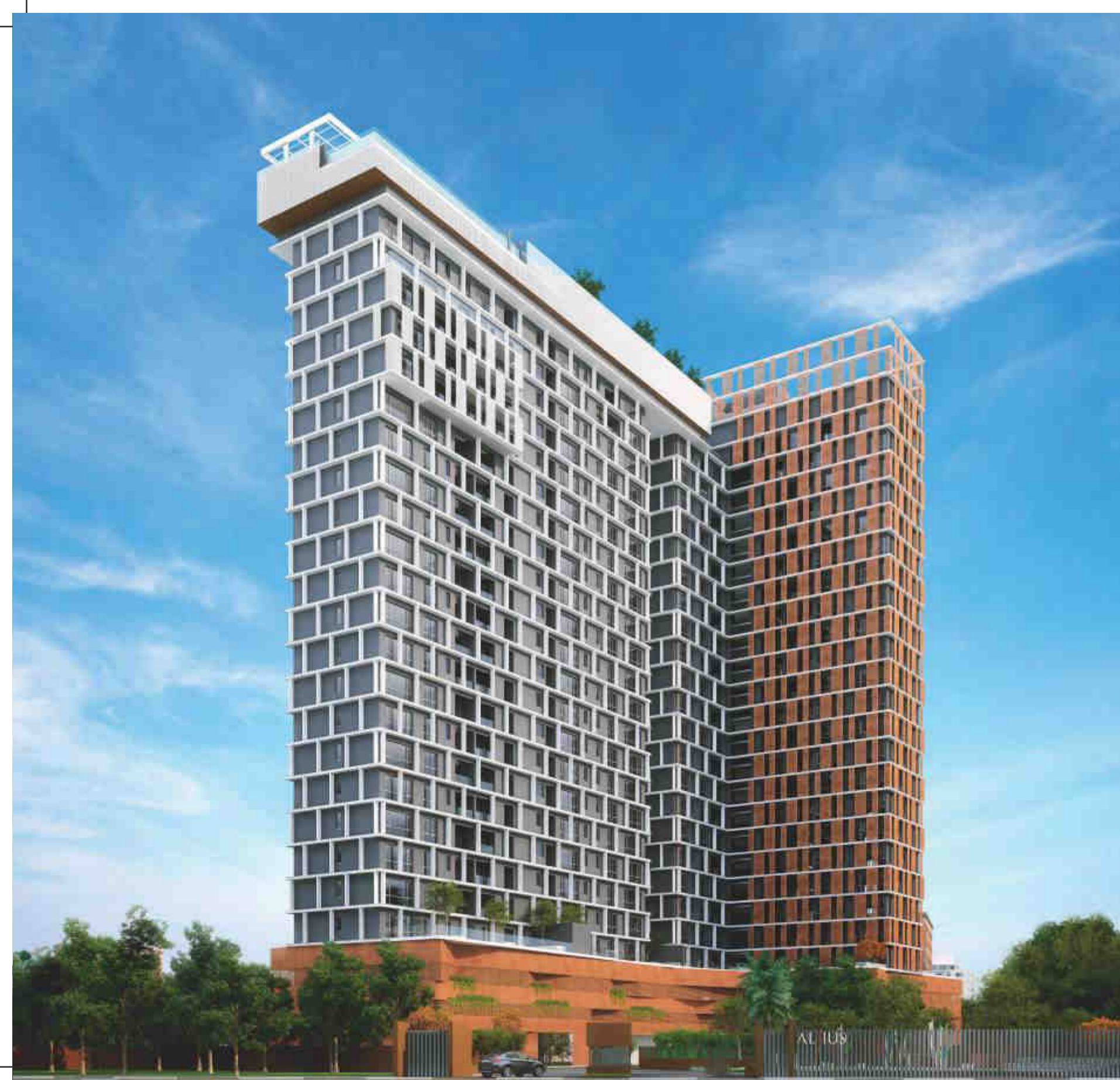


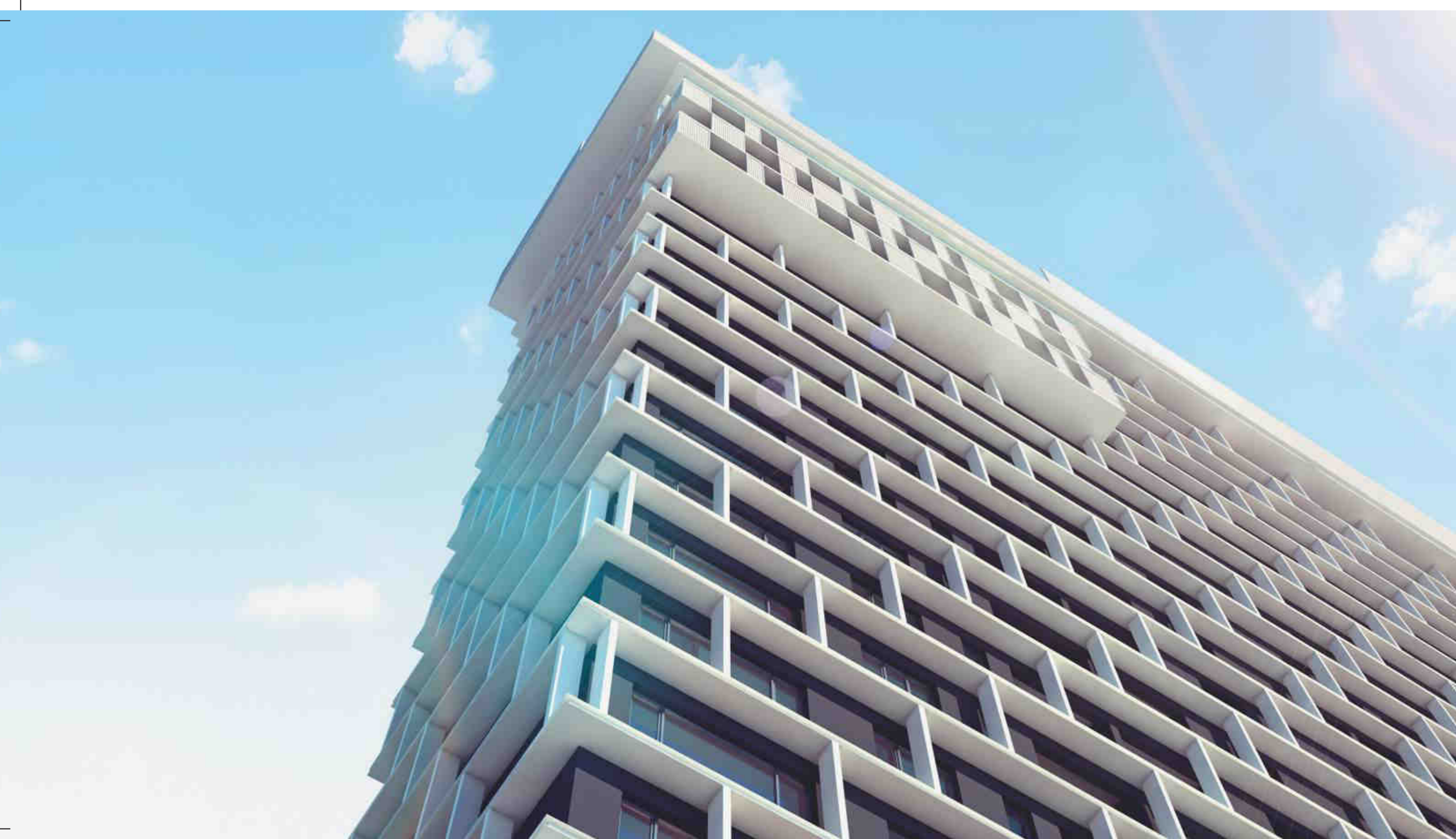
A PICTURE
IS WORTH
ATHOUSAND
WORDS



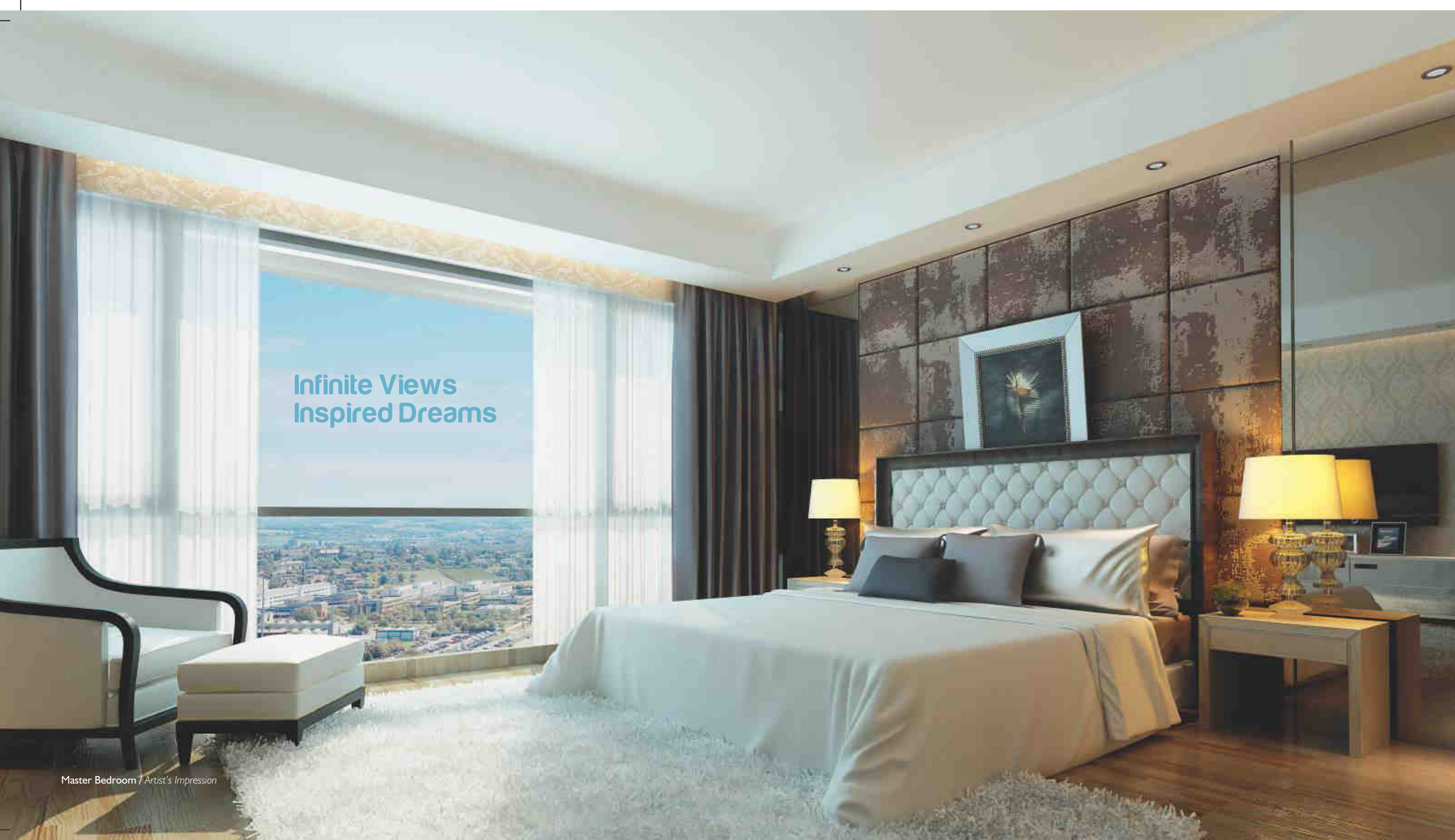


ALTUS

Latin for 'Higher', Altius finds special mention in the Olympics motto – Citius, Altius, Fortius - meaning - Faster, Higher, Stronger. A bold and modern architectural icon combined with the best in International living; Altius is about being on top, both literally and metaphorically.

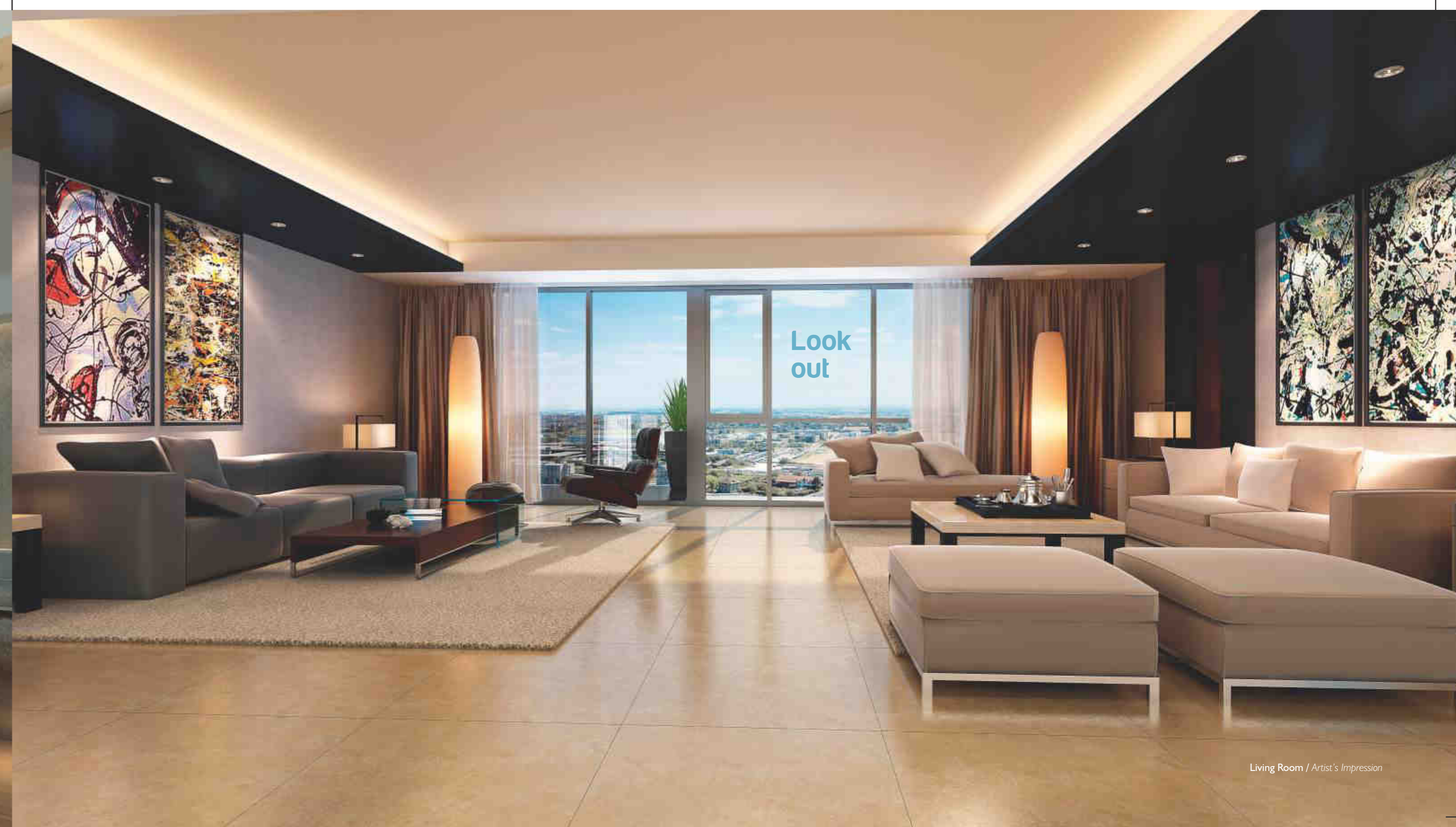


**Where my views
are as large
as my dreams**



Infinite Views
Inspired Dreams

Master Bedroom / Artist's Impression

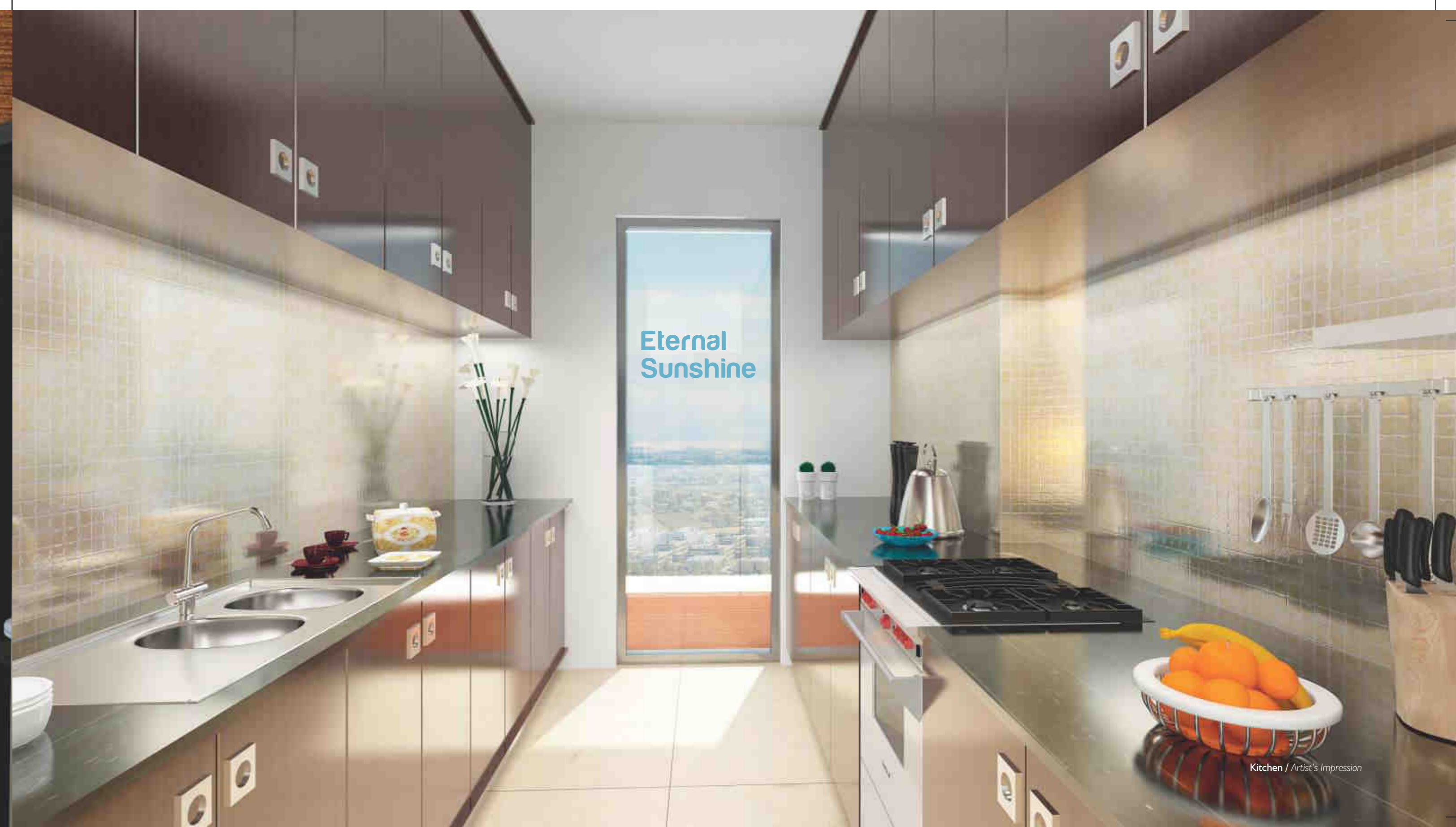


Look
out

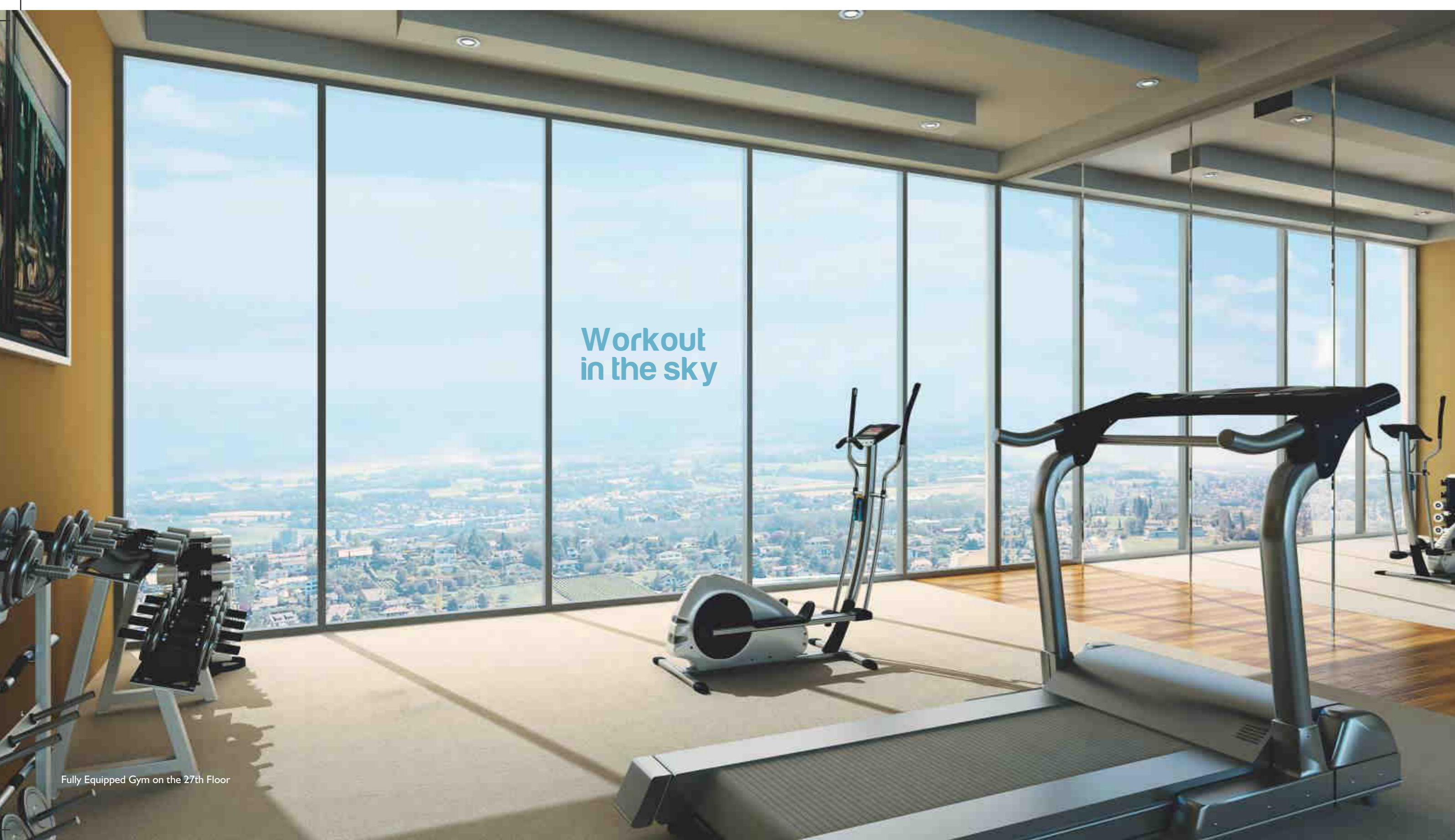
Living Room / Artist's Impression



Dining Room / Artist's Impression



Kitchen / Artist's Impression



Fully Equipped Gym on the 27th Floor

Where I can
challenge myself
and play till I win



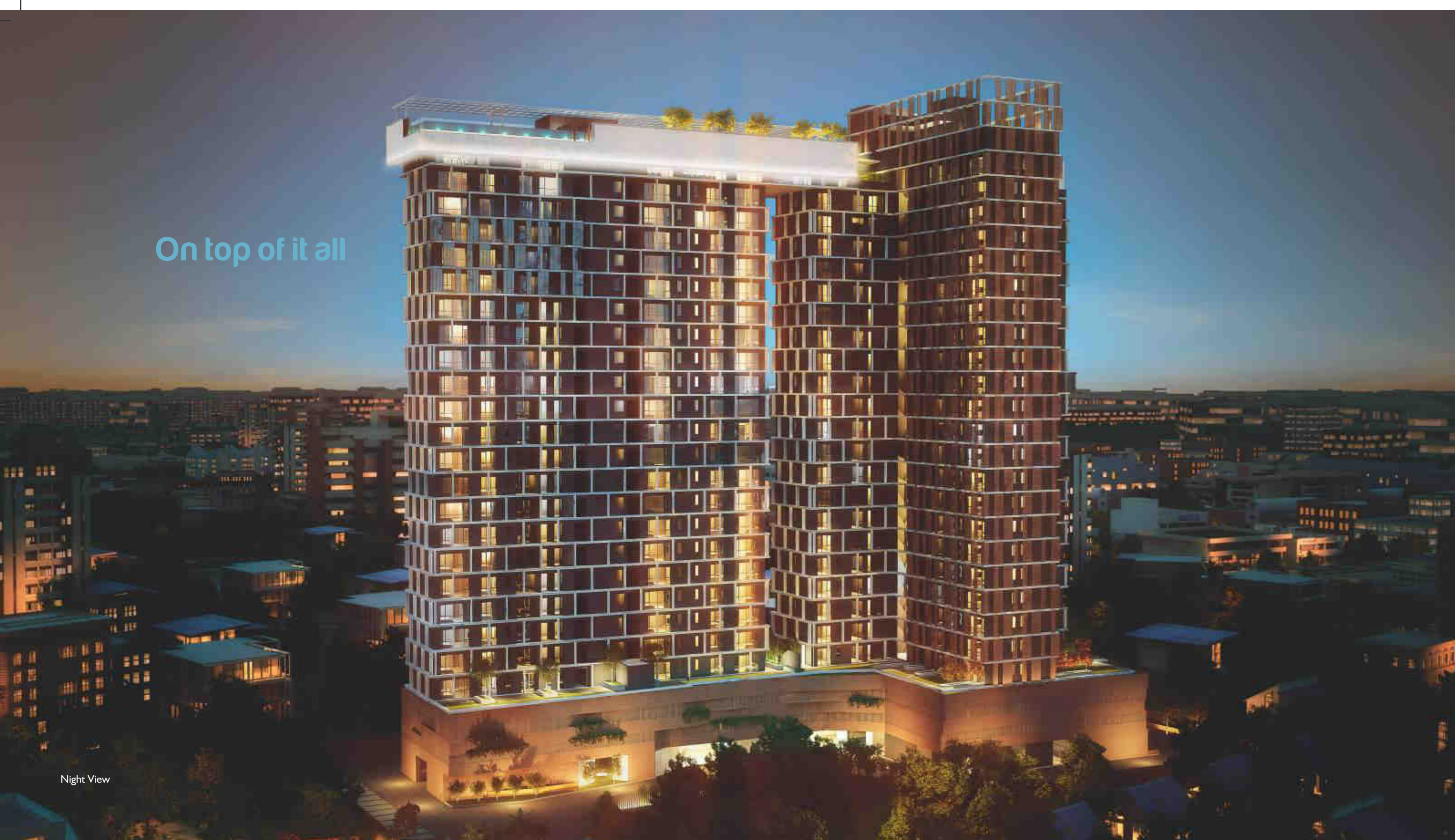
Steaming
Sunsets

Steam Room



High
on Life

Home Theatre, Lounge, Library, Pool / Billiards Room, Card Room & Video Game Room on the 27th Floor



On top of it all

Night View

Where I look
down and see the
world below me

350 feet above everyone else

Sky's the limit



Infinity Pool



Go Green.
Not just with envy.

*Altius - Eastern India's 1st IGBC pre-certified
Platinum rated Green Homes. Sustainable
features of this multi-residential apartment
ensure healthy living*

Location

Heart of city living

Excellent connectivity to Park Street & CBD, Sector V, Rajarhat New Town, Airport

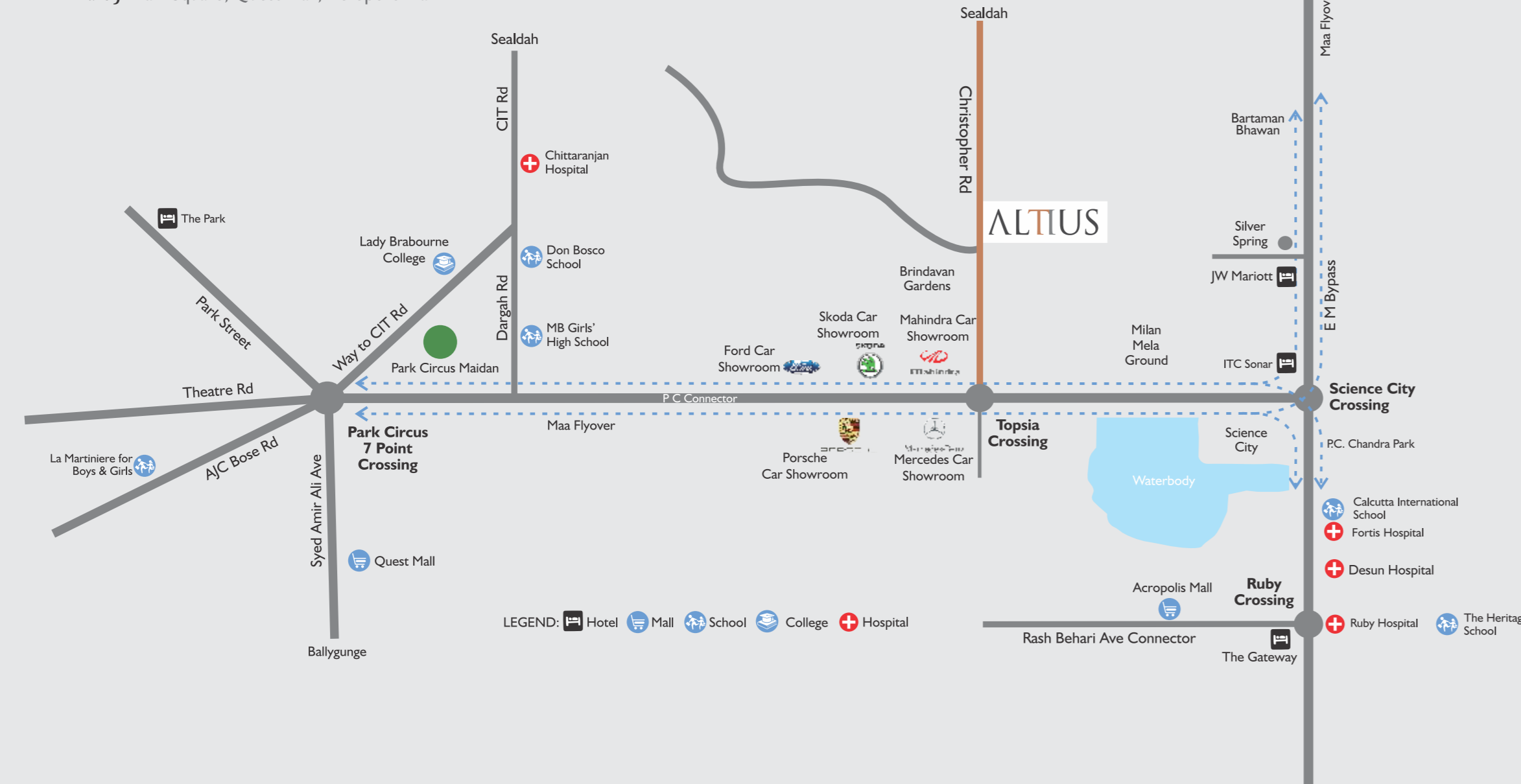
Close to all modern amenities:

Hotels } ITC The Sonar, JW Marriott, The Gateway

Schools } Don Bosco School Park Circus, MB Girls High School, Calcutta International School, The Heritage School, La Martiniere for Boys & Girls, The Apeejay School

Hospitals } Apollo, Ruby, Peerless, AMRI (Vision Care), Fortis, Desun, Rabindranath Tagore, Medica Superspeciality

Malls } Mani Square, Quest Mall, Acropolis Mall



Options

Tower West }

4 BHK flats, super built up areas ranging from 2911 to 3924 sq. ft.
All flats 3 side open, south facing with either balconies or terrace.

Tower East }

3 BHK flats, super built up areas ranging from 2168 to 3089 sq. ft.
4 BHK flats, super built up areas ranging from 2922 to 4508 sq. ft.
All flats 3 side open, south facing with either balconies or terrace.

Penthouse on top floor, super built up area is 5290 sq. ft.
Flats are equipped with premium fittings / floorings.
All flats Vastu approved.

Amenities

A complete lifestyle zone located on the 27th floor with a terrace and bridge connecting the two residential towers. Swim, play, relax & entertain.....with your head in the cloud.

Anti-gravity The Club } Fully Equipped Gym with steam. Games room / Billiards Pool Room / Cards Room / Home Theatre / Lounge Area / Library Squash Court / Infinity Pool on the Roof / Fully Landscaped Roof Garden.

Ground Floor } Community Hall / Multi-level Car Park / Drop-off Plaza
Fire Fighting Equipment as per law / Rain-water Harvesting
Waste Water Recycling / Green areas.

Specifications

Flooring } Pure Italian Marble in Living / Dining and Bedroom, One bedroom having Wooden Flooring.

Kitchen } Niral stainless steel sink, ESS ESS CP fittings, Italian Marble flooring, Granite countertop, Varmora tiles dado upto 2'.

Wall Finish } Interior Wall Putty / Plaster of Paris.
Exterior Textured / Cement based paints.

Door } All door and door frames from Duro, Door Frame made upto 8' height, Flush solid core / Panel doors, Stainless Steel locks & hinges.

Railings } Laminated glass railings & Varmora Tiles floor in the balconies.

Windows } Fully glazed Aluminium / UPVC windows from Kawneer, USA & Glass from Pilkington, UK.

Toilet } Varmora premium tiles on the wall upto 9' height, Sanitaryware from Bravat, Germany, Countertop basin and CP fittings, Shower cubicle in Master Toilet, Provision for Geysers in all toilets, Astral Concealed plumbing and pipe work, Jaquar Flush system.

Wash } Provision for washing machine.

Electrical } Provision for adequate light and fan points, Provision for TV and telephone lines in all bedrooms and Living / Dining, Modular Switches from LeGrand, France, Adequate 5/15A points in all areas.

Air conditioning } Individual Daikin VRF outdoor unit of adequate capacity.

Generators } Back-up for common areas, services and apartments.

Wiring } Mescab concealed copper wiring for electricity, telephone and television.

Elevators from Mitsubishi } West Tower - 3 Lifts (2 Passenger and 1 Stretcher Type)
East Tower - 4 Lifts (3 Passenger and 1 Stretcher Type).

CCTV } All lobbies & Car Parking areas.

Intercom } IP based intercom system with Video calling provision between apartments.



Ground Floor ^N
 COMMUNITY HALL 2548 SQ FT



Car Parking
1st & 2nd Floor ^N



Tower West
3rd Floor ALL AREAS IN SQ. FT.

FLAT	FLAT CA	BALCONY CA	TOTAL CA	BUA	SBUA
W1	2093	39	2132	3269	3924
W2	2183			3143	3872



Tower East
3rd Floor ALL AREAS IN SQ. FT.

FLAT	FLAT CA	BALCONY CA	TOTAL CA	BUA	SBUA
E1	1542			2363	2893
E2	1647	51	1698	2437	3089
E3	2088	52	2140	3953	4508



Tower West
4th Floor ALL AREAS IN SQ. FT.

FLAT	FLAT CA	BALCONY CA	TOTAL CA	BUA	SBUA
W1	1903	37	1940	2169	2924
W2	1965	87	2052	2231	3008



Tower East
4th Floor ALL AREAS IN SQ. FT.

FLAT	FLAT CA	BALCONY CA	TOTAL CA	BUA	SBUA
E1	1376	78	1454	1609	2168
E2	1547	102	1649	1821	2453
E3	1911	29	1940	2184	2943



Tower West
5th Floor



FLAT	FLAT CA	BALCONY CA	TOTAL CA	BUA	SBUA
W1	1902	69	1971	2160	2911
W2	1965	87	2052	2231	3008



Tower East
5th Floor



FLAT	FLAT CA	BALCONY CA	TOTAL CA	BUA	SBUA
E1	1376	78	1454	1609	2168
E2	1547	51	1598	1821	2453
E3	1911	69	1980	2168	2922



Tower West
6th Floor



FLAT	FLAT CA	BALCONY CA	TOTAL CA	BUA	SBUA
W1	1902	37	1939	2160	2911
W2	1965	87	2051	2231	3008



Tower East
6th Floor



FLAT	FLAT CA	BALCONY CA	TOTAL CA	BUA	SBUA
E1	1376	78	1454	1609	2168
E2	1548	110	1658	1829	2465
E3	1911	28	1939	2168	2922



Tower West
7th Floor



FLAT	FLAT CA	BALCONY CA	TOTAL CA	BUA	SBUA
W1	1914	78	1992	2274	3065
W2	2020	47	2067	2332	3143



Tower East
7th Floor



FLAT	FLAT CA	BALCONY CA	TOTAL CA	BUA	SBUA
E1	1430	36	1466	1681	2264
E2	1560	51	1611	1962	2648
E3	1911	84	1995	2184	2943



Tower West
8th Floor



FLAT	FLAT CA	BALCONY CA	TOTAL CA	BUA	SBUA
W1	1903	37	1940	2169	2924
W2	2008	57	2065	2382	3216



Tower East
8th Floor



FLAT	FLAT CA	BALCONY CA	TOTAL CA	BUA	SBUA
E1	1431	36	1467	1686	2272
E2	1547	102	1649	1821	2453
E3	1911	28	1939	2183	2943



Tower West
9th Floor



FLAT	FLAT CA	BALCONY CA	TOTAL CA	BUA	SBUA
W1	1951	37	1988	2299	3100
W2	2057	47	2104	2385	3216



Tower East
9th Floor



FLAT	FLAT CA	BALCONY CA	TOTAL CA	BUA	SBUA
E1	1438	36	1474	1756	2365
E2	1548	51	1599	1821	2453
E3	1911	28	1939	2168	2922



Tower West

10th Floor

↑
N
ALL AREAS IN SQ. FT.

FLAT	FLAT CA	BALCONY CA	TOTAL CA	BUA	SBUA
W1	1902	37	1939	2236	3014
W2	2020	47	2067	2331	3143



Tower East

10th Floor

↑
N
ALL AREAS IN SQ. FT.

FLAT	FLAT CA	BALCONY CA	TOTAL CA	BUA	SBUA
E1	1430	36	1466	1681	2264
E2	1613	60	1673	1983	2672
E3	1911	28	1939	2168	2922



Tower West
11th Floor

↑
N
ALL AREAS IN SQ. FT.

FLAT	FLAT CA	BALCONY CA	TOTAL CA	BUA	SBUA
W1	1915	78	1993	2274	3065
W2	2012	57	2069	2385	3216



Tower East
11th Floor

↑
N
ALL AREAS IN SQ. FT.

FLAT	FLAT CA	BALCONY CA	TOTAL CA	BUA	SBUA
E1	1431	36	1467	1686	2272
E2	1563	51	1614	1965	2648
E3	1911	84	1995	2183	2943



Tower West

12th Floor

↑
N
ALL AREAS IN SQ. FT.

FLAT	FLAT CA	BALCONY CA	TOTAL CA	BUA	SBUA
W1	1903	37	1940	2169	2924
W2	2026	48	2074	2385	3216



Tower East

12th Floor

↑
N
ALL AREAS IN SQ. FT.

FLAT	FLAT CA	BALCONY CA	TOTAL CA	BUA	SBUA
E1	1438	36	1474	1755	2365
E2	1547	102	1649	1821	2453
E3	1912	28	1940	2184	2943



Tower West

13th Floor

N
ALL AREAS IN SQ. FT.

FLAT	FLAT CA	BALCONY CA	TOTAL CA	BUA	SBUA
W1	1951	37	1988	2299	3100
W2	2020	47	2067	2332	3143



Tower East

13th Floor

N
ALL AREAS IN SQ. FT.

FLAT	FLAT CA	BALCONY CA	TOTAL CA	BUA	SBUA
E1	1430	36	1466	1681	2264
E2	1548	51	1599	1821	2453
E3	1911	70	1981	2169	2922



Tower West
14th Floor

↑
 N
 ALL AREAS IN SQ. FT.

FLAT	FLAT CA	BALCONY CA	TOTAL CA	BUA	SBUA
W1	1905	37	1943	2236	3014
W2	2012	57	2069	2385	3216



Tower East
14th Floor

↑
 N
 ALL AREAS IN SQ. FT.

FLAT	FLAT CA	BALCONY CA	TOTAL CA	BUA	SBUA
E1	1431	36	1467	1686	2272
E2	1613	61	1674	1983	2672
E3	1911	29	1940	2169	2922



Tower West
15th Floor

↑
 N
 ALL AREAS IN SQ. FT.

FLAT	FLAT CA	BALCONY CA	TOTAL CA	BUA	SBUA
W1	1914	82	1996	2278	3065
W2	2026	48	2074	2385	3216



Tower East
15th Floor

↑
 N
 ALL AREAS IN SQ. FT.

FLAT	FLAT CA	BALCONY CA	TOTAL CA	BUA	SBUA
E1	1438	36	1474	1755	2365
E2	1563	51	1614	1965	2648
E3	1911	84	1995	2183	2943



Tower West
16th Floor

↑
N
ALL AREAS IN SQ. FT.

FLAT	FLAT CA	BALCONY CA	TOTAL CA	BUA	SBUA
W1	1903	37	1940	2169	2924
W2	2020	47	2067	2331	3143



Tower East
16th Floor

↑
N
ALL AREAS IN SQ. FT.

FLAT	FLAT CA	BALCONY CA	TOTAL CA	BUA	SBUA
E1	1430	36	1466	1681	2264
E2	1547	102	1649	1821	2453
E3	1911	28	1939	2183	2943



Tower West

17th Floor

↑
N
ALL AREAS IN SQ. FT.

FLAT	FLAT CA	BALCONY CA	TOTAL CA	BUA	SBUA
W1	1951	37	1988	2297	3100
W2	1965	88	2053	2231	3008



Tower East

17th Floor

↑
N
ALL AREAS IN SQ. FT.

FLAT	FLAT CA	BALCONY CA	TOTAL CA	BUA	SBUA
E1	1431	36	1467	1686	2272
E2	1547	102	1649	1821	2453
E3	1911	69	1980	2168	2922



Tower West

18th Floor

↑
N
ALL AREAS IN SQ. FT.

FLAT	FLAT CA	BALCONY CA	TOTAL CA	BUA	SBUA
W1	1902	37	1939	2236	3014
W2	1965	88	2053	2231	3008



Tower East

18th Floor

↑
N
ALL AREAS IN SQ. FT.

FLAT	FLAT CA	BALCONY CA	TOTAL CA	BUA	SBUA
E1	1438	36	1474	1755	2365
E2	1626	111	1737	2045	2757
E3	1911	69	1980	2168	2922



Tower West

19th Floor

↑ N
ALL AREAS IN SQ. FT.

FLAT	FLAT CA	BALCONY CA	TOTAL CA	BUA	SBUA
W1	1924	110	2034	2313	3118
W2	1965	88	2053	2231	3008



Tower East

19th Floor

↑ N
ALL AREAS IN SQ. FT.

FLAT	FLAT CA	BALCONY CA	TOTAL CA	BUA	SBUA
E1	1430	36	1466	1681	2264
E2	1576	161	1737	2028	2733
E3	1923	126	2049	2236	3013



Tower West
20th Floor ALL AREAS IN SQ. FT.

FLAT	FLAT CA	BALCONY CA	TOTAL CA	BUA	SBUA
W1	1959	78	2037	2347	3167
W2	1965	88	2053	2231	3008



Tower East
20th Floor ALL AREAS IN SQ. FT.

FLAT	FLAT CA	BALCONY CA	TOTAL CA	BUA	SBUA
E1	1431	36	1467	1686	2272
E2	1560	161	1721	1891	2549
E3	1923	126	2049	2236	3013



Tower West

21st Floor

↑
N
ALL AREAS IN SQ. FT.

FLAT	FLAT CA	BALCONY CA	TOTAL CA	BUA	SBUA
W1	2108	170	2278	2591	3493
W2	2218	128	2346	2540	3421



Tower East

21st Floor

↑
N
ALL AREAS IN SQ. FT.

FLAT	FLAT CA	BALCONY CA	TOTAL CA	BUA	SBUA
E1	1438	36	1474	1755	2365
E2	1626	111	1737	2045	2757
E3	1923	126	2049	2236	3013



Tower West

22nd Floor



ALL AREAS IN SQ. FT.

FLAT	FLAT CA	BALCONY CA	TOTAL CA	BUA	SBUA
W1	2120	202	2322	2614	3528
W2	2218	128	2346	2540	3421



Tower East

22nd Floor



ALL AREAS IN SQ. FT.

FLAT	FLAT CA	BALCONY CA	TOTAL CA	BUA	SBUA
E1	1430	36	1466	1681	2264
E2	1576	161	1737	2028	2733
E3	1923	126	2049	2236	3013



Tower West
23rd Floor

↑
N
ALL AREAS IN SQ. FT.

FLAT	FLAT CA	BALCONY CA	TOTAL CA	BUA	SBUA
W1	2108	199	2307	2512	3387
W2	2219	129	2348	2540	3421



Tower East
23rd Floor

↑
N
ALL AREAS IN SQ. FT.

FLAT	FLAT CA	BALCONY CA	TOTAL CA	BUA	SBUA
E1	1431	36	1467	1686	2272
E2	1560	160	1720	1891	2549
E3	1923	126	2049	2236	3013



Tower West
24th Floor



ALL AREAS IN SQ. FT.

FLAT	FLAT CA	BALCONY CA	TOTAL CA	BUA	SBUA
W1	2120	168	2288	2702	3643
W2	2216	129	2345	2540	3421



Tower East
24th Floor



ALL AREAS IN SQ. FT.

FLAT	FLAT CA	BALCONY CA	TOTAL CA	BUA	SBUA
E1	1438	36	1474	1755	2364
E2	1626	111	1737	2045	2756
E3	1923	126	2049	2236	3013



Tower West
25th Floor



ALL AREAS IN SQ. FT.

FLAT	FLAT CA	BALCONY CA	TOTAL CA	BUA	SBUA
W1	2050	31	2081	2614	3524
W2	2044	57	2101	2536	3418



Tower East
25th Floor



ALL AREAS IN SQ. FT.

FLAT	FLAT CA	BALCONY CA	TOTAL CA	BUA	SBUA
E1	1430	36	1466	1681	2264
E2	1576	160	1736	2028	2733
E3	1925	126	2051	2236	3013



Tower West
26th Floor



ALL AREAS IN SQ. FT.

FLAT	FLAT CA	BALCONY CA	TOTAL CA	BUA	SBUA
W1	1996	31	2027	2211	2977
W2	1965	88	2053	2231	3008



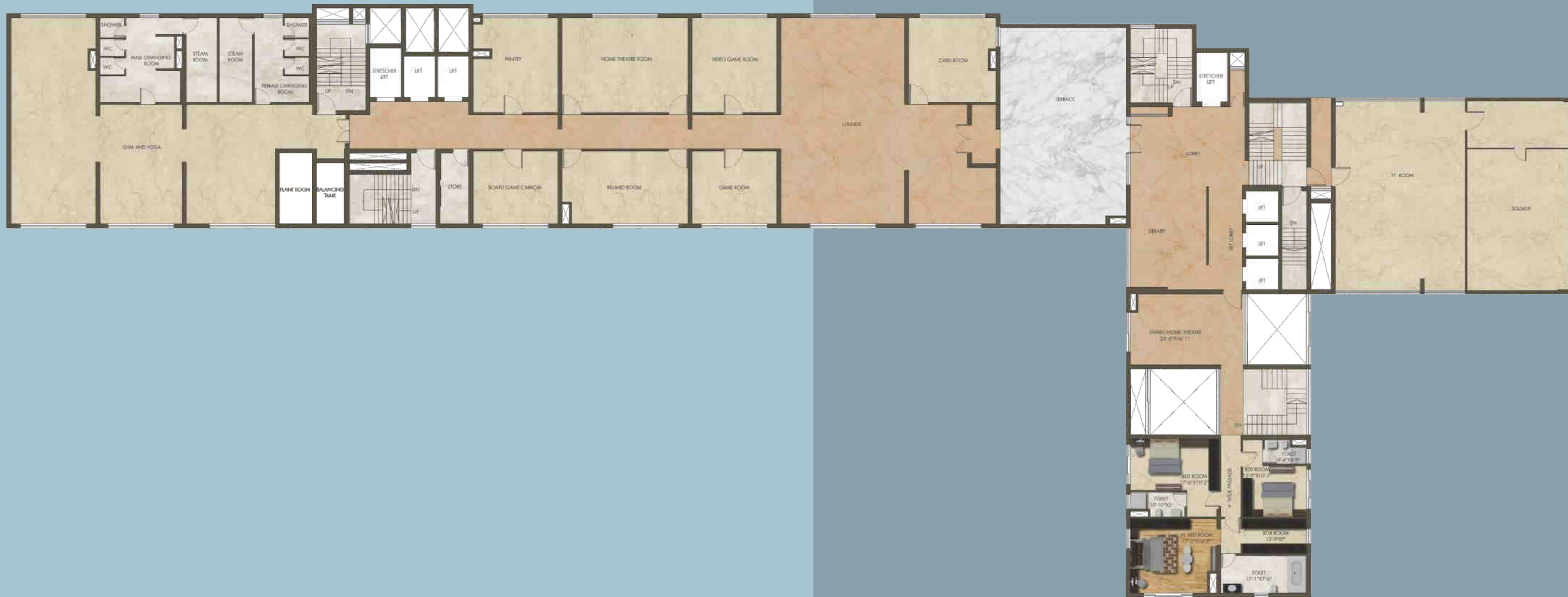
Tower East
26th Floor



ALL AREAS IN SQ. FT.

FLAT	FLAT CA	BALCONY CA	TOTAL CA	BUA	SBUA
E1	1376	78	1454	1609	2168
E2	1560	160	1720	1888	2549
E3	3406	117	3523	3918	5290

Club on
27th Floor ^N



Service=Success

PIYUSH BHAGAT

In the two decades of its existence, the Space Group has booked/ delivered 2700 apartments (as on 30 September 2005) aggregating Rs. 4235 million: it has developed 13 residential projects within 24 years: it enjoys an ongoing or delivered experience across 5.5 million square feet. By this virtue, it has emerged as one of the largest in its industry in Eastern India. The Group has succeeded because it has studied international trends, pioneered an international residential lifestyle quality at an affordable price, educated consumers and raised aspirations. The Group's success has been driven by its after-sales service, its ability to customize apartments to owner needs and an ability to enhance the respectability of the entire pin-code in which it selects to locate its projects.



Excellance in all that we do

HARISH SINGHANIA

The Empress Group is synonymous with endearing excellence, inspiring integrity, resilient relationships and above all, quintessential quality. A veritably seasoned entity –the Empress Group possesses a decade-rich experience in the development of showpiece real estate properties across the residential and commercial under the brand 'Ekta'. A unique combination of strengthened focus, independent vision, resource mobilisation and organization-building is the fundamental mantra backing the Empress Group.



Reaching destinations, shaping destiny

RAVI KHAITAN

With the destination set, Prudent has its task charted to emerge as a key player in the real estate scenario. Headed with the experience of more than 2 decades of market knowledge, Prudent is destined to develop win-win relationships with financiers, marketing consultants, investors & buyers. Honesty is the forte, no 'behind the closed door' finds voice here. Be it residential & commercial projects, housing, townships or business relationships; transparency resides in all communication.



Developers



CONSULTANTS
ACTA, SINGAPORE
MAHESHWARI & ASSOCIATES, KOLKATA
ARCHITECTS

STERLING ENGINEERS, MUMBAI
S.P.A. CONSULTANTS, KOLKATA
STRUCTURAL ENGINEERS

SHETH TECHNOCONSULTANTS PVT LTD
MEP CONSULTANTS

CENTRE FOR SUSTAINABLE DESIGN
GREEN CONSULTANTS

DESIGN ACCORD
LANDSCAPE ARCHITECTS

HIRA TAPARIA
AURA COSMIC VASTU CONSULTANT

OWNER
HARMONY VINIMAY PVT. LTD.
GSTIN: 19AACCH3211P1ZG

Disclaimer This document is not a legal offering; the information and plans contained herein are subject to changes and deviations as may be decided by the developer or required or approved by the authorities. All art renderings, illustrations, pictures, photographs and other graphic representation and references are artist's impressions only. Nothing herein shall form part of an offer or contact or be constructed as any representation by the developer or its agent. All internal measurements stated herein are approximate.

May 2018

Project HIRA No. : HIRA/P/KOL/2018/000017 | Agent HIRA No. : HIRA/A/KOL/2018/000010 | Details Available At: <https://hira.wb.gov.in>

ALTIUS

67 CHRISTOPHER ROAD, KOLKATA 700 046 | CONTACT +91 33 40024002 | SALES@PIONEERPROPERTY.IN

THIS PROJECT IS FUNDED BY

TATA CAPITAL
HOUSING FINANCE LIMITED

Home loans are brought to you by
Tata Capital Housing Finance Limited and are at their sole discretion.
Terms and conditions apply.